

Pythia 8: DIS and photoproduction

MC4EIC

Ilkka Helenius

November 18th, 2022



JYVÄSKYLÄN YLIOPISTO
UNIVERSITY OF JYVÄSKYLÄ



ACADEMY OF FINLAND
CoE in Quark Matter



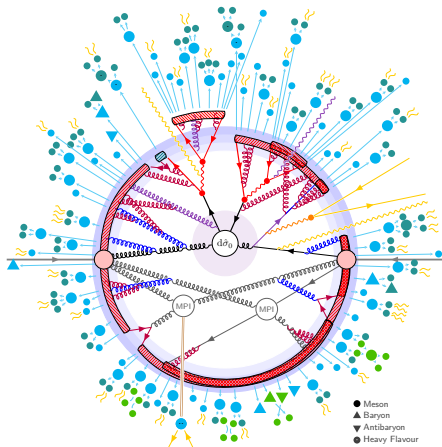
Outline

Pythia 8: A general purpose Monte-Carlo event generator

- A new manual for 8.3 release
SciPost Phys. Codebases 8-r8.3 (2022);
arXiv:2203.11601 [hep-ph]

Outline

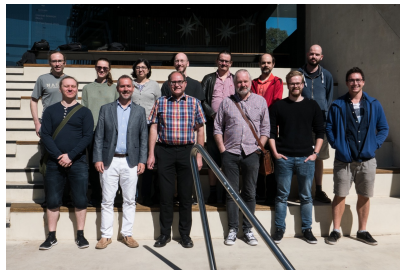
1. Deep inelastic scattering
2. Photoproduction at HERA
3. Ultraperipheral collisions LHC
4. Photoproduction of diffractive dijets
5. Summary & Outlook



[figure by P. Skands]

PYTHIA Collaboration

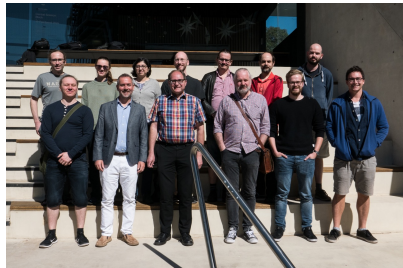
- Christian Bierlich (Lund University)
- Nishita Desai (TIFR, Mumbai)
- Leif Gellersen (Lund University)
- Ilkka Helenius (University of Jyväskylä)
- Philip Ilten (University of Cincinnati)
- Leif Lönnblad (Lund University)
- Stephen Mrenna (Fermilab)
- Christian Preuss (ETH Zurich)
- Torbjörn Sjöstrand (Lund University)
- Peter Skands (Monash University)
- Marius Utheim (University of Jyväskylä)
- Rob Verheyen (University College London)



[Pythia meeting in Monash 2019]

PYTHIA Collaboration

- Christian Bierlich (Lund University)
- Nishita Desai (TIFR, Mumbai)
- Leif Gellersen (Lund University)
- Ilkka Helenius (University of Jyväskylä)
- Philip Ilten (University of Cincinnati)
- Leif Lönnblad (Lund University)
- Stephen Mrenna (Fermilab)
- Christian Preuss (ETH Zurich)
- Torbjörn Sjöstrand (Lund University)
- Peter Skands (Monash University)
- Marius Utheim (University of Jyväskylä)
- Rob Verheyen (University College London)



[Pythia meeting in Monash 2019]

- Spokesperson
- Codemaster
- Webmaster

<https://pythia.org>
authors@pythia.org

Electron-proton collisions

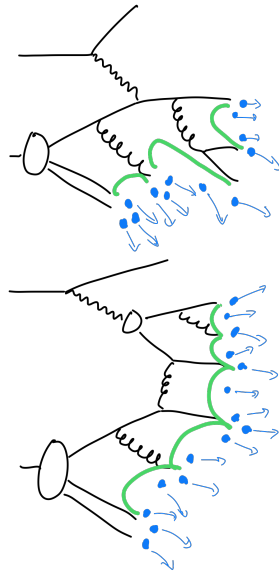
Classified in terms photon virtuality Q^2

Deep inelastic scattering (DIS)

- High virtuality, $Q^2 > \text{a few GeV}^2$
- Lepton scatters off from a parton by exchanging a highly virtual photon

Photoproduction

- Low virtuality, $Q^2 \rightarrow 0 \text{ GeV}^2$
⇒ Direct and resolved contributions
- Factorize γ flux, evolve γp system
- Hard scale provided by the final state
- Also soft QCD processes, diffraction



Event generation in DIS with PYTHIA 8

Hard scattering

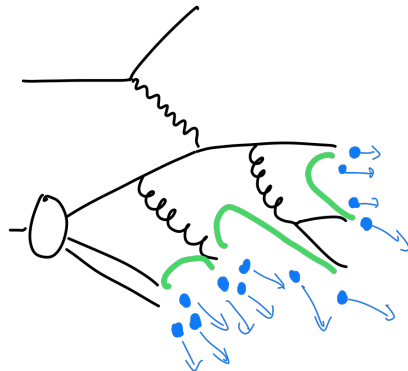
- Convolution between PDFs and matrix element (ME) for partonic scattering

Parton shower

- Final state radiation (FSR)
- Initial state radiation (ISR) for hadron
- QED emissions from leptons (omitted)

Hadronization

- String hadronization with colour reconnections
- Decays to stable hadrons



Alternative shower model `dipoleRecoil`

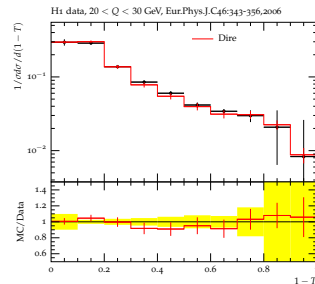
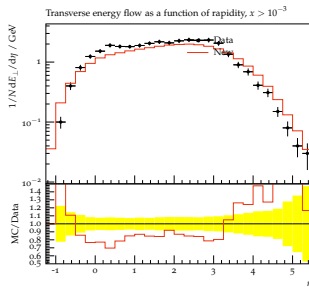
[B. Cabouat and T. Sjöstrand, EPJC 78 (2018 no.3, 226)]

- No PS recoil for the scattered lepton
- Reasonable description of single-particle properties, such as transverse energy flow
- Results based on tune with the default global-recoil shower

Completely new shower `DIRE`

[S. Höche, S. Prestel, EPJC 75 (2015) no.9, 461]

- Correct soft-gluon interference at lowest order
- Inclusive NLO corrections to collinear splittings
- Good agreement with HERA data e.g. for thrust T



Event generation in photoproduction

Direct processes

- Photon initiator of the hard process (DIS-like)
- Convolute photon flux f_γ with proton PDFs f_i^p and $d\hat{\sigma}$

$$d\sigma^{bp \rightarrow kl+X} = f_\gamma^b(x) \otimes f_i^p(x_p, \mu^2) \otimes d\hat{\sigma}^{\gamma i \rightarrow kl}$$

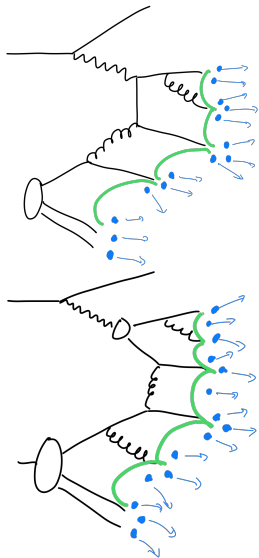
- Generate FSR and ISR for proton side

Resolved processes

- Convolute also with photon PDFs

$$d\sigma^{bp \rightarrow kl+X} = f_\gamma^b(x) \otimes f_j^\gamma(x_\gamma, \mu^2) \otimes f_i^p(x_p, \mu^2) \otimes d\sigma^{ij \rightarrow kl}$$

- Sample x and Q^2 , setup γp sub-system with $W_{\gamma p}$
- Evolve γp as any hadronic collision (including MPIs)



Evolution equation and PDFs for resolved photons

DGLAP equation for photons

- Additional term due to $\gamma \rightarrow q\bar{q}$ splittings

$$\frac{\partial f_i^\gamma(x, Q^2)}{\partial \log(Q^2)} = \frac{\alpha_{em}}{2\pi} e_i^2 P_{i\gamma}(x) + \frac{\alpha_s(Q^2)}{2\pi} \sum_j \int_x^1 \frac{dz}{z} P_{ij}(z) f_j(x/z, Q^2)$$

where $P_{i\gamma}(x) = 3(x^2 + (1-x)^2)$ for quarks, 0 for gluons (LO)

- Resulting PDFs has **point-like** (or anomalous) and **hadron-like** components

$$f_i^\gamma(x, Q^2) = f_i^{\gamma, \text{pl}}(x, Q^2) + f_i^{\gamma, \text{had}}(x, Q^2)$$

- $f_i^{\gamma, \text{pl}}$: Calculable from perturbative QCD
- $f_i^{\gamma, \text{had}}$: Requires non-perturbative input fixed in a global analysis

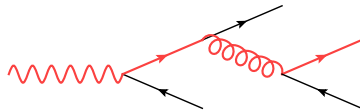
Evolution equation and ISR for resolved photons

ISR probability based on DGLAP evolution

- Add a term corresponding to $\gamma \rightarrow q\bar{q}$ to (conditional) ISR probability

$$d\mathcal{P}_{a\leftarrow b} = \frac{dQ^2}{Q^2} \frac{\alpha_s}{2\pi} \frac{x' f_a^\gamma(x', Q^2)}{x f_b^\gamma(x, Q^2)} P_{a\rightarrow bc}(z) dz + \frac{dQ^2}{Q^2} \frac{\alpha_{em}}{2\pi} \frac{e_b^2 P_{\gamma\rightarrow bc}(x)}{f_b^\gamma(x, Q^2)}$$

- Corresponds to ending up to the beam photon during evolution
 - \Rightarrow Parton originated from the point-like part of the PDFs
 - No further ISR or MPIs below the scale of the splitting
 - No need for beam remnants



Comparison to HERA dijet photoproduction data

ZEUS dijet measurement

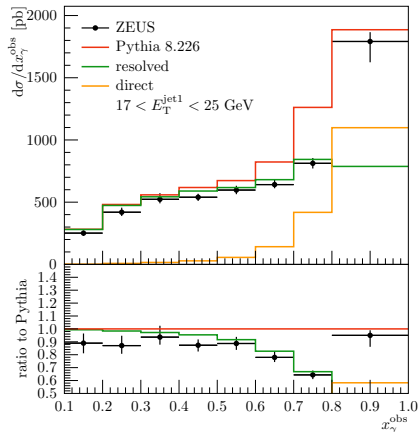
- $Q^2 < 1.0 \text{ GeV}^2$
- $134 < W_{\gamma p} < 277 \text{ GeV}$
- $E_T^{\text{jet1}} > 14 \text{ GeV}, E_T^{\text{jet2}} > 11 \text{ GeV}$
- $-1 < \eta^{\text{jet1,2}} < 2.4$

Two contributions

- Momentum fraction of partons in photon

$$x_\gamma^{\text{obs}} = \frac{E_T^{\text{jet1}} e^{\eta^{\text{jet1}}} + E_T^{\text{jet2}} e^{\eta^{\text{jet2}}}}{2yE_e} \approx x_\gamma$$

- Sensitivity to process type
- At high- x_γ^{obs} direct processes dominate



[ZEUS: Eur.Phys.J. C23 (2002) 615-631]

Comparison to HERA dijet photoproduction data

ZEUS dijet measurement

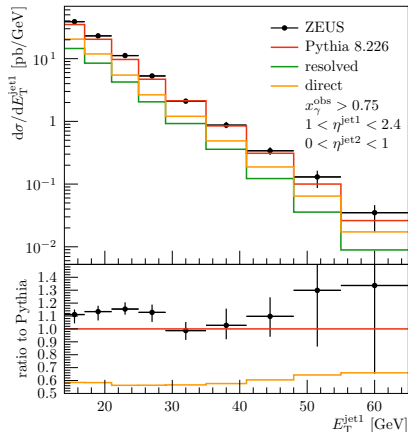
- $Q^2 < 1.0 \text{ GeV}^2$
- $134 < W_{\gamma p} < 277 \text{ GeV}$
- $E_T^{\text{jet1}} > 14 \text{ GeV}, E_T^{\text{jet2}} > 11 \text{ GeV}$
- $-1 < \eta^{\text{jet1,2}} < 2.4$

Two contributions

- Momentum fraction of partons in photon

$$x_\gamma^{\text{obs}} = \frac{E_T^{\text{jet1}} e^{\eta^{\text{jet1}}} + E_T^{\text{jet2}} e^{\eta^{\text{jet2}}}}{2yE_e} \approx x_\gamma$$

- Sensitivity to process type
- At high- x_γ^{obs} direct processes dominate



[ZEUS: Eur.Phys.J. C23 (2002) 615-631]

Comparison to HERA dijet photoproduction data

ZEUS dijet measurement

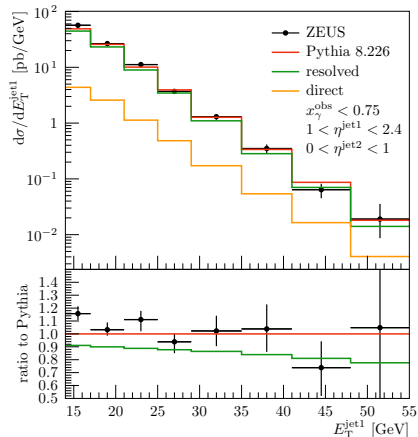
- $Q^2 < 1.0 \text{ GeV}^2$
- $134 < W_{\gamma p} < 277 \text{ GeV}$
- $E_T^{\text{jet1}} > 14 \text{ GeV}, E_T^{\text{jet2}} > 11 \text{ GeV}$
- $-1 < \eta^{\text{jet1,2}} < 2.4$

Two contributions

- Momentum fraction of partons in photon

$$x_\gamma^{\text{obs}} = \frac{E_T^{\text{jet1}} e^{\eta^{\text{jet1}}} + E_T^{\text{jet2}} e^{\eta^{\text{jet2}}}}{2yE_e} \approx x_\gamma$$

- Sensitivity to process type
- At high- x_γ^{obs} direct processes dominate



[ZEUS: Eur.Phys.J. C23 (2002) 615-631]

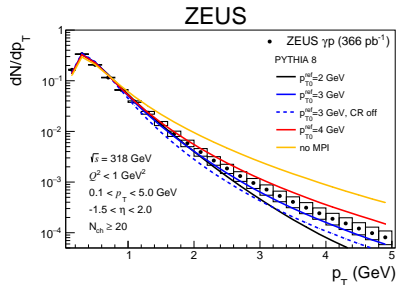
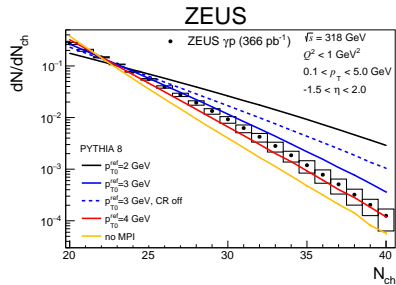
Multiplicity distributions

- Multiplicity distributions sensitive to MPIs with resolved photons
- ZEUS data support for MPIs but with slightly larger p_{T0}^{ref} than in pp \Rightarrow less MPIs

p_T spectra for $N_{\text{ch}} > 20$

- Similar agreement as above
- Useful constraints for MPIs in γp system
- Good agreement also in $c_1\{2\}$

[Rivet Analysis in preparation]



Equivalent photon approximation

Implemented photon fluxes

- In case of a point-like lepton we have

$$f_{\gamma}^l(x, Q^2) = \frac{\alpha_{em}}{2\pi} \frac{(1 + (1-x)^2)}{x} \frac{1}{Q^2}$$

- For protons need to account the form factor

$$f_{\gamma}^p(x, Q^2) = \frac{\alpha_{em}}{2\pi} \frac{(1 + (1-x)^2)}{x} \frac{1}{Q^2} \frac{1}{(1 + Q^2/Q_0^2)^4}$$

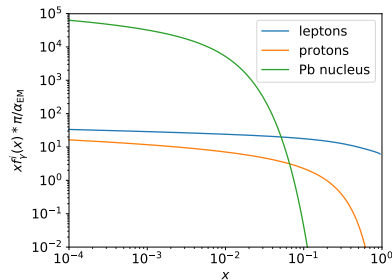
where $Q_0^2 = 0.71 \text{ GeV}^2$ (Drees-Zeppenfeld) \Rightarrow Large Q^2 heavily suppressed

- With heavy nuclei use b -integrated point-like-charge flux

$$f_{\gamma}^A(x) = \frac{2\alpha_{EM}Z^2}{x\pi} \left[\xi K_1(\xi)K_0(\xi) - \frac{\xi^2}{2} (K_1^2(\xi) - K_0^2(\xi)) \right]$$

where $\xi = b_{\min} x m$ where b_{\min} reject nuclear overlap, $Q^2 \ll 1 \text{ GeV}^2$

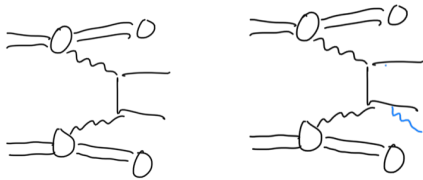
\Rightarrow Can apply photoproduction framework with all these beams!



$\gamma\gamma \rightarrow \mu^+\mu^-$ in proton-proton collisions

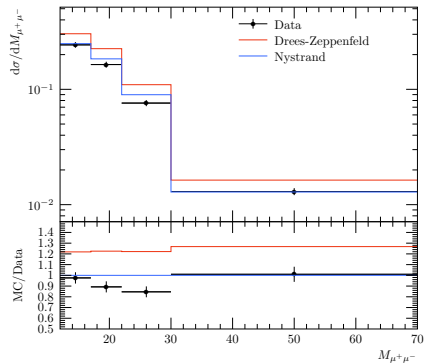
Elastic-elastic contribution

- Photons have small k_T proportional to Q^2
- Muons almost back-to-back ($A_{\text{co}} \approx 0$)
- Small effect from FSR



Clean process to calibrate flux

- Reasonable agreement with ATLAS data using EPA, DZ can be improved

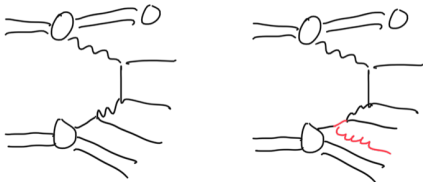


[ATLAS: PLB 777 (2018) 303-323]

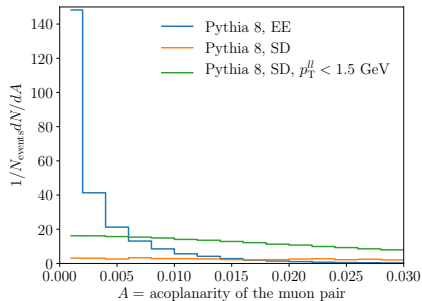
$\gamma\gamma \rightarrow \mu^+\mu^-$ in proton-proton collisions

Single-dissociative contribution

- Other γ from elastic flux, other as a part of DGLAP evolved proton PDFs
- Dissociative side will get primordial- k_T sampled from gaussian with width $\mathcal{O}(\text{GeV})$
- Also QCD ISR generated, significant p_T



- Cuts on $p_T^{\mu\mu}$ suppress events with ISR

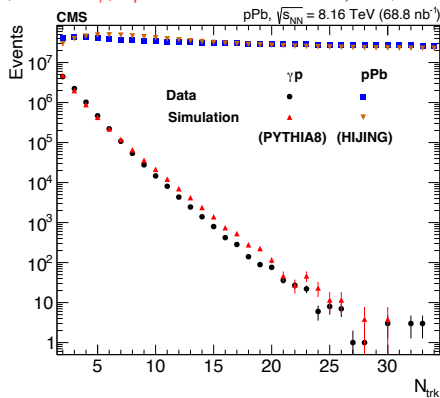


Double dissociative

- Both photons from PDFs with primordial- k_T and ISR
- ⇒ Large acoplanarity

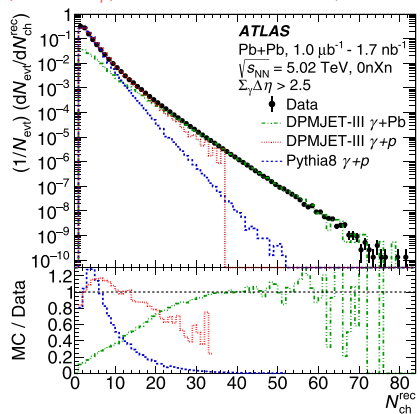
Ultra-peripheral heavy-ion collisions

$(\text{Pb} \rightarrow \gamma)+p$: [CMS: Murillo Quijada, QM2022]



- Multiplicities well reproduced with γp

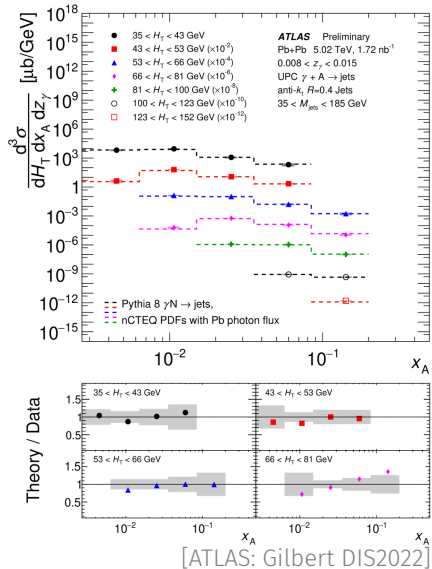
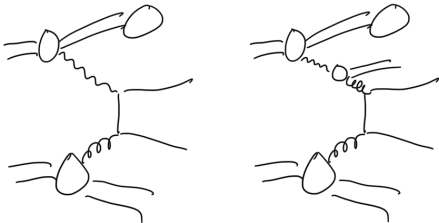
$(\text{Pb} \rightarrow \gamma)+\text{Pb}$: [ATLAS: PRC 104, 014903 (2021)]

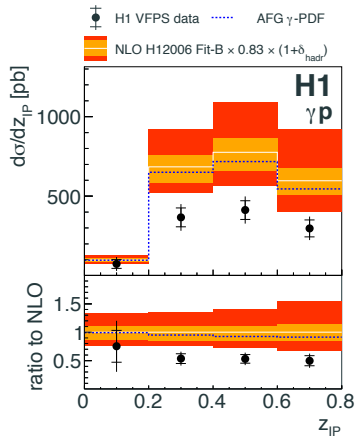
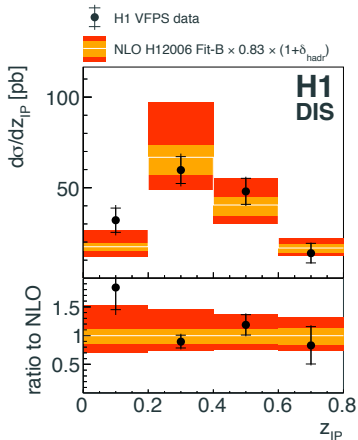


- High multiplicities missed with γp
⇒ Multi-nucleon interactions

Dijets in ultra-peripheral heavy-ion collisions

- Novel constraints for nuclear PDFs, x_A to estimate probed nuclear x
- Pythia setup with nucleon target only \Rightarrow Not a realistic background for jet reconstruction
- Good agreement out of the box when accounting both direct and resolved





- H1 data and factorization-based NLO calculation in DIS (high Q^2) in agreement
- NLO calculation overshoot the data in photoproduction (low Q^2)
- ⇒ Factorization broken in hard diffraction at low Q^2 similarly as in pp

Hard diffraction in photoproduction

- Process with a hard scale, described with a colour-neutral Pomeron (IP) exchange
- Experimentally identified from rapidity gap

Factorization of the diffractive cross section

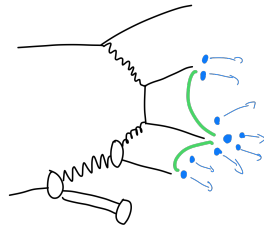
- Direct: Pomeron flux and diffractive PDFs (dPDFs)

$$d\sigma_{\text{direct}}^{2\text{jets}} = f_{\gamma}^b(x) \otimes d\sigma^{\gamma j \rightarrow 2\text{jets}} \otimes f_j^{\text{IP}}(z_{\text{IP}}, \mu^2) \otimes f_{\text{P}}^{\text{D}}(x_{\text{P}}, t)$$

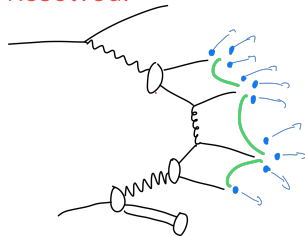
- Resolved: photon PDFs

$$d\sigma_{\text{resolved}}^{2\text{jets}} = f_{\gamma}^b(x) \otimes f_i^{\gamma}(x_{\gamma}, \mu^2) \otimes d\sigma^{ij \rightarrow 2\text{jets}} \otimes f_j^{\text{IP}}(z_{\text{IP}}, \mu^2) \otimes f_{\text{P}}^{\text{D}}(x_{\text{P}}, t)$$

Direct:



Resolved:



Hard diffraction in PYTHIA 8

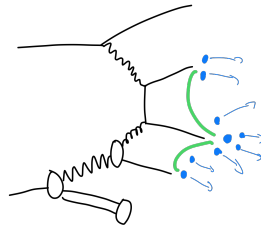
Hard diffraction in photoproduction

- Process with a hard scale, described with a colour-neutral Pomeron (IP) exchange
- Experimentally identified from rapidity gap

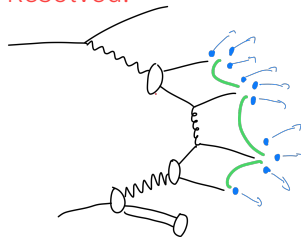
Dynamical rapidity gap survival model

1. Generate diffractive events with dPDFs (PDF)

Direct:



Resolved:



Hard diffraction in PYTHIA 8

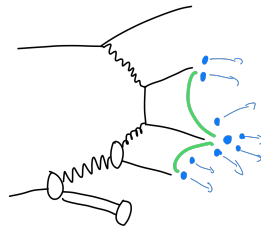
Hard diffraction in photoproduction

- Process with a hard scale, described with a colour-neutral Pomeron (IP) exchange
- Experimentally identified from rapidity gap

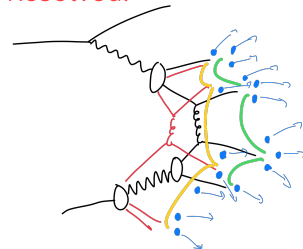
Dynamical rapidity gap survival model

1. Generate diffractive events with dPDFs (PDF)
2. Reject events where MPIs in γp system (MPI)

Direct:



Resolved:



Hard diffraction in PYTHIA 8

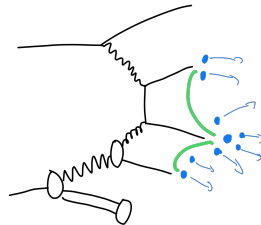
Hard diffraction in photoproduction

- Process with a hard scale, described with a colour-neutral Pomeron (IP) exchange
- Experimentally identified from rapidity gap

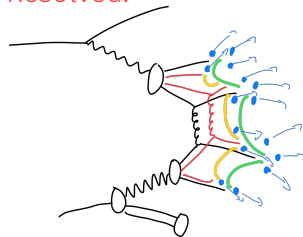
Dynamical rapidity gap survival model

1. Generate diffractive events with dPDFs (PDF)
2. Reject events where MPIs in γp system (MPI)
3. Evolve γIP system, allow MPIs

Direct:



Resolved:



Hard diffraction in PYTHIA 8

Hard diffraction in photoproduction

- Process with a hard scale, described with a colour-neutral Pomeron (IP) exchange
- Experimentally identified from rapidity gap

Dynamical rapidity gap survival model

1. Generate diffractive events with dPDFs (PDF)
2. Reject events where MPIs in γp system (MPI)
3. Evolve γIP system, allow MPIs

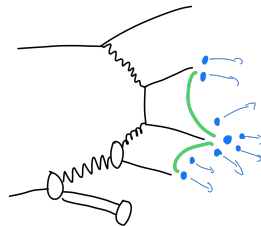
Implemented from PYTHIA 8.235 onwards

[I.H. and C.O. Rasmussen, EPJC 79 (2019) no.5, 413]

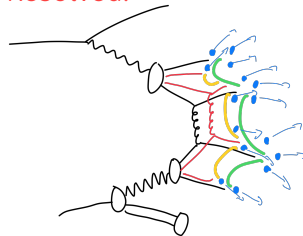
Same idea applied for pp collisions at the LHC

[C.O. Rasmussen and T. Sjöstrand, JHEP 1602 (2016) 142]

Direct:

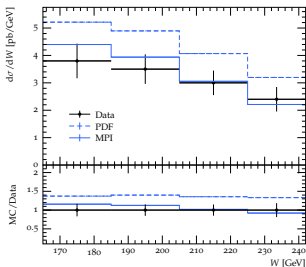


Resolved:

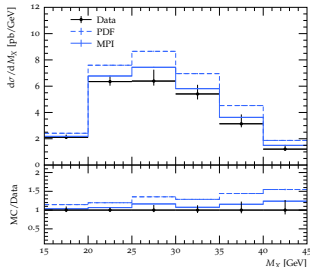


Comparisons to HERA data

H1: [EPJC 51 (2007) 549]



ZEUS: [EPJC 55 (2008) 177]



- PDF selection overshoots the data by 20–50 %
- Impact of the MPI rejection increases with W
- Stronger suppression in H1 analysis due to looser cuts on E_T^{jets} and $x_{\text{ip}} \Rightarrow$ More MPIs

Cuts

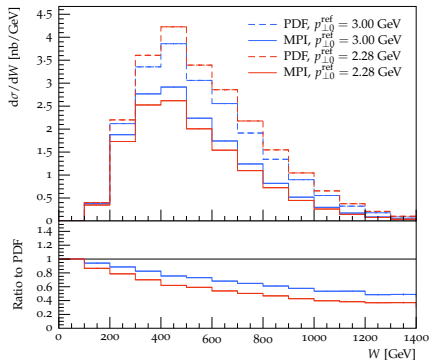
	H1	ZEUS
Q_{max}^2 [GeV ²]	0.01	1.0
$E_{T,\text{min}}^{\text{jet1}}$ [GeV]	5.0	7.5
$E_{T,\text{min}}^{\text{jet2}}$ [GeV]	4.0	6.5
$x_{\text{ip}}^{\text{max}}$	0.03	0.025

PYTHIA setup

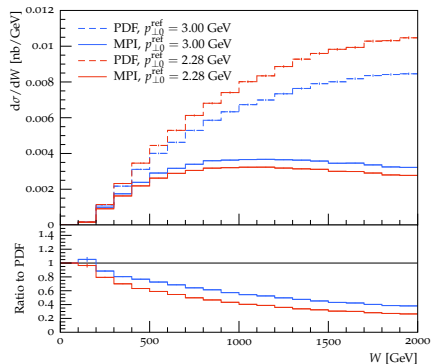
- dPDFs from H1 fit B LO
- γ PDFs from CJKL
- $p_{T0}^{\text{ref}} = 3.00$ GeV/c
(Tuned to inclusive charged particle data from γp at HERA)

Predictions for diffractive dijets in UPC

pPb $\sqrt{s} = 5.0$ TeV



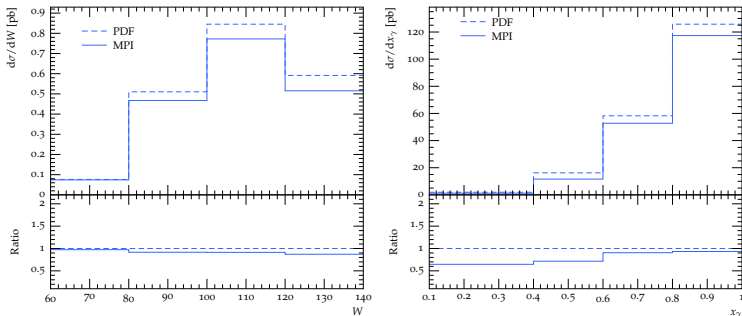
pp $\sqrt{s} = 13$ TeV



- Extended W range wrt. HERA, especially in pp (harder flux)
- Stronger suppression from MPIs than at HERA
- ⇒ Ideal process to study factorization-breaking effects in hard diffraction

Predictions for EIC

Repeat the H1 analysis at EIC kinematics ($E_e = 18$ GeV, $E_p = 275$ GeV)



- Only up to $\sim 10\%$ effects in the considered W range
 - Noticeable suppression only at low x_γ where cross section small
- ⇒ Available energy and kinematical cuts for diffraction push the kinematics to region where only little room for MPIs ($E_T^{\text{jet1}} > 5.0$ GeV, $E_T^{\text{jet2}} > 4.0$ GeV)

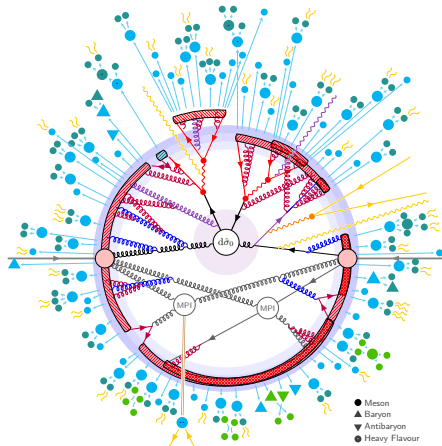
Summary & Outlook

PYTHIA 8.3

- DIS with two parton showers
 - Framework for photoproduction
- ⇒ Can be applied also to ultra-peripheral collisions
- Photon fluxes in place for protons and heavy nuclei

Future

- Subsequent resolved-photon nucleon interactions for $\gamma+A$ (Angantyr model)
- Consider intermediate Q^2 region

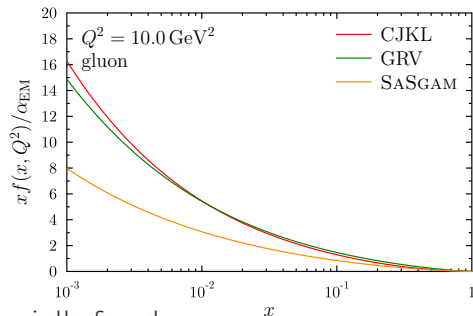
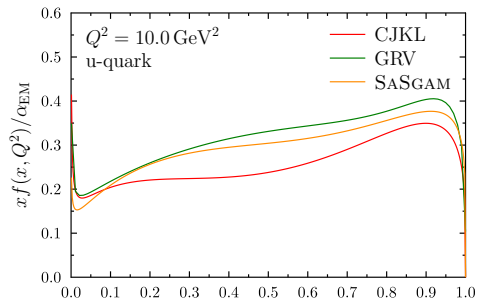


[figure by P. Skands]

Backup slides

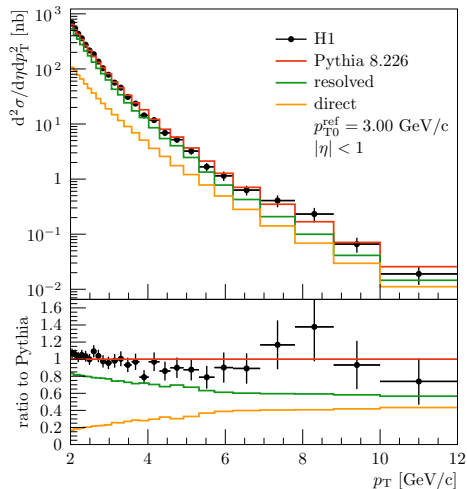
PDFs for resolved photons

Comparison of different photon PDF analysis



- Some differences between analyses, especially for gluon
⇒ Theoretical uncertainty for resolved processes
- CJKL used as a default in PYTHIA 8, others via LHAPDF5 but only for hard-process generation

Charged particle p_T spectra in ep collisions at HERA



[H1: Eur.Phys.J. C10 (1999) 363-372]

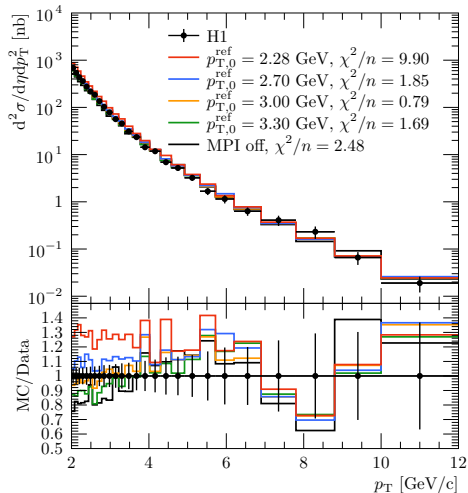
H1 measurement

- $E_p = 820 \text{ GeV}$, $E_e = 27.5 \text{ GeV}$
- $\langle W_{\gamma p} \rangle \approx 200 \text{ GeV}$
- $Q_\gamma^2 < 0.01 \text{ GeV}^2$

Comparison to PYTHIA 8

- Resolved contribution dominates
 - Good agreement with the data using $p_{T0}^{\text{ref}} = 3.00 \text{ GeV}/c$
- ⇒ MPI probability between pp and $\gamma\gamma$

Charged particle p_T spectra in ep collisions at HERA



[H1: Eur.Phys.J. C10 (1999) 363-372]

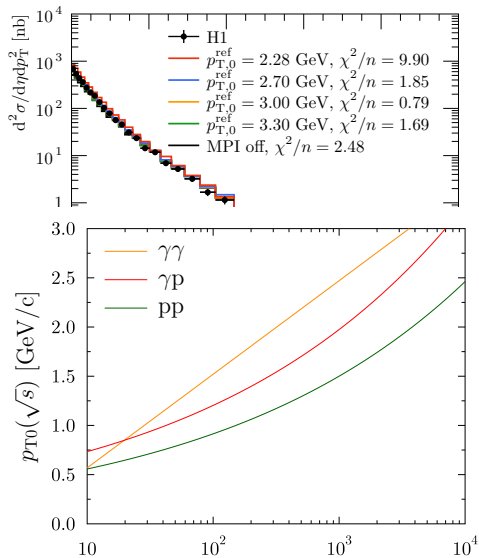
H1 measurement

- $E_p = 820$ GeV, $E_e = 27.5$ GeV
- $\langle W_{\gamma p} \rangle \approx 200$ GeV
- $Q_\gamma^2 < 0.01$ GeV²

Comparison to PYTHIA 8

- Resolved contribution dominates
 - Good agreement with the data using $p_{T0}^{\text{ref}} = 3.00$ GeV/c
- ⇒ MPI probability between pp and $\gamma\gamma$

Charged particle p_T spectra in ep collisions at HERA



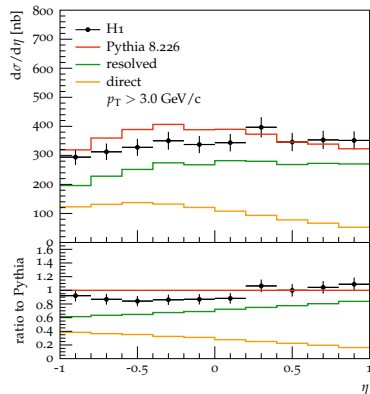
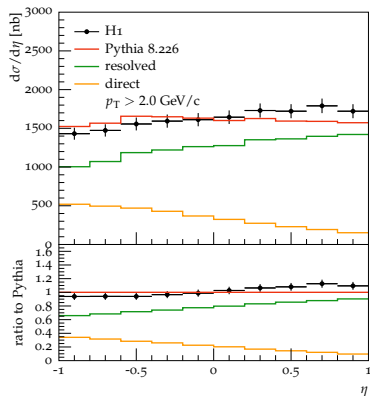
H1 measurement

- $E_p = 820$ GeV, $E_e = 27.5$ GeV
- $\langle W_{\gamma p} \rangle \approx 200$ GeV
- $Q_\gamma^2 < 0.01$ GeV²

Comparison to PYTHIA 8

- Resolved contribution dominates
 - Good agreement with the data using $p_{T0}^{\text{ref}} = 3.00$ GeV/c
- \Rightarrow MPI probability between pp and $\gamma\gamma$

Charged-particle η dependence



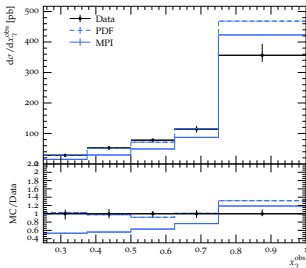
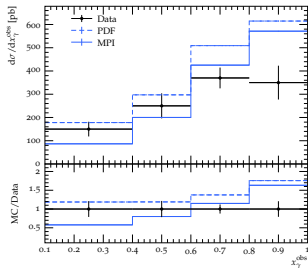
[H1: Eur.Phys.J. C10 (1999) 363-372]

- Good agreement also for charged-particle η dependence
- Resolved contribution dominates the cross section

Comparisons to HERA data

H1: [EPJC 51 (2007) 549]

ZEUS: [EPJC 55 (2008) 177]



- Stronger suppression at low- x_γ^{obs} (more MPIs)
- ZEUS cuts select events at high- x_γ^{obs} region
- Some theoretical uncertainty from γ PDFs, dPDFs and scale variation

Cuts

H1

ZEUS

Q_{max}^2 [GeV²]

0.01

1.0

$E_{T,min}^{jet1}$ [GeV]

5.0

7.5

$E_{T,min}^{jet2}$ [GeV]

4.0

6.5

x_{ip}^{max}

0.03

0.025

χ^2 analysis

PDF

MPI

H1

5.2

1.4

ZEUS

9.6

5.1

H1 & ZEUS

7.6

3.4

(with all data points)

Intermediate Q^2 region

Solid theory for $Q^2 = 0$ and at high Q^2

⇒ What happens in between?

Pythia 6 (inspired) model (≠ Pythia 8)

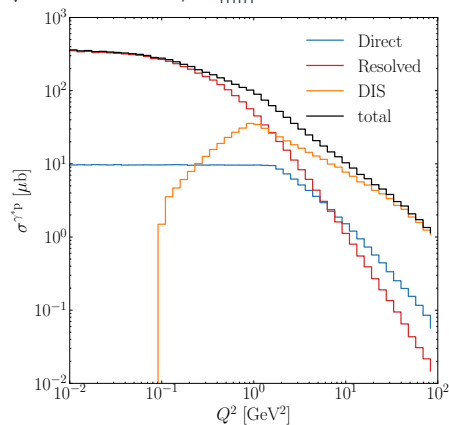
- Select suitable scales and suppress contributions by hand

$$\sigma_{\text{tot}}^{\gamma^*p} = \tilde{\sigma}_{\text{DIS}}^{\gamma^*p} \exp\left[-\frac{\tilde{\sigma}_{\text{Dir}}^{\gamma^*p}}{\tilde{\sigma}_{\text{DIS}}^{\gamma^*p}}\right] + \tilde{\sigma}_{\text{Dir}}^{\gamma^*p} + \tilde{\sigma}_{\text{Res}}^{\gamma^*p}$$

where

- $\tilde{\sigma}_{\text{DIS}}^{\gamma^*p} = \left[\frac{Q^2}{Q^2+m_\rho^2}\right]^2 \sigma_{\text{DIS}}^{\gamma^*p}$
- $\tilde{\sigma}_{\text{Res}}^{\gamma^*p} = \sigma_{\text{Res}}^{\gamma^*p} \left[\frac{m_\rho^2}{m_\rho^2+Q^2}\right]^2 \left[\frac{W^2}{W^2+Q^2}\right]^n$
- $\tilde{\sigma}_{\text{Dir}}^{\gamma^*p} = \sigma_{\text{Dir}}^{\gamma^*p} (\hat{p}_{T,\text{min}} = \max(Q, p_{T,\text{min}}))$
 $p_{T,\text{min}} = 1.3 \text{ GeV}, n = 3, m_\rho = 0.7755 \text{ GeV}$

$\sqrt{s} = 318 \text{ GeV}, W_{\text{min}} = 100 \text{ GeV}$:



Intermediate: $0.5 \lesssim Q^2 \lesssim 5.0 \text{ GeV}^2$

Intermediate Q^2 region

Solid theory for $Q^2 = 0$ and at high Q^2

⇒ What happens in between?

Pythia 6 (inspired) model (≠ Pythia 8)

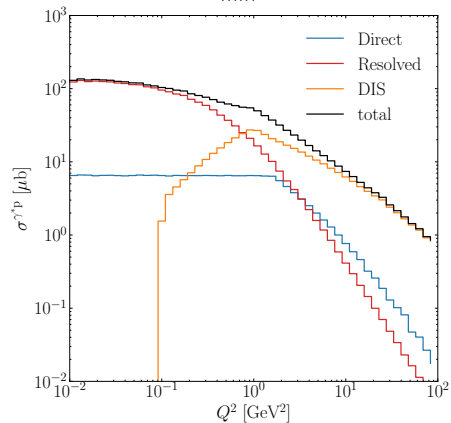
- Select suitable scales and suppress contributions by hand

$$\sigma_{\text{tot}}^{\gamma^*p} = \tilde{\sigma}_{\text{DIS}}^{\gamma^*p} \exp\left[-\frac{\tilde{\sigma}_{\text{Dir}}^{\gamma^*p}}{\tilde{\sigma}_{\text{DIS}}^{\gamma^*p}}\right] + \tilde{\sigma}_{\text{Dir}}^{\gamma^*p} + \tilde{\sigma}_{\text{Res}}^{\gamma^*p}$$

where

- $\tilde{\sigma}_{\text{DIS}}^{\gamma^*p} = \left[\frac{Q^2}{Q^2+m_\rho^2}\right]^2 \sigma_{\text{DIS}}^{\gamma^*p}$
- $\tilde{\sigma}_{\text{Res}}^{\gamma^*p} = \sigma_{\text{Res}}^{\gamma^*p} \left[\frac{m_\rho^2}{m_\rho^2+Q^2}\right]^2 \left[\frac{W^2}{W^2+Q^2}\right]^n$
- $\tilde{\sigma}_{\text{Dir}}^{\gamma^*p} = \sigma_{\text{Dir}}^{\gamma^*p} (\hat{p}_{T,\text{min}} = \max(Q, p_{T,\text{min}}))$
 $p_{T,\text{min}} = 1.3 \text{ GeV}, n = 3, m_\rho = 0.7755 \text{ GeV}$

$\sqrt{s} = 140 \text{ GeV}, W_{\text{min}} = 10 \text{ GeV}$:



Intermediate: $0.3 \lesssim Q^2 \lesssim 3.0 \text{ GeV}^2$

Intermediate Q^2 region

Solid theory for $Q^2 = 0$ and at high Q^2

⇒ What happens in between?

Pythia 6 (inspired) model (\neq Pythia 8)

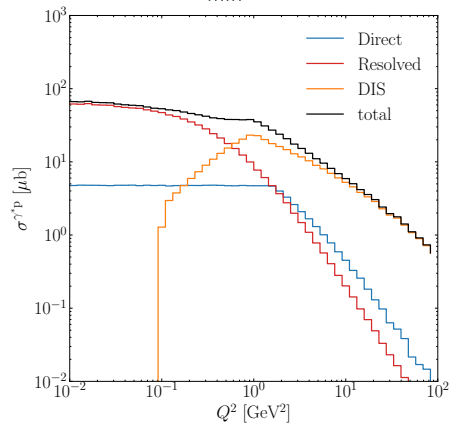
- Select suitable scales and suppress contributions by hand

$$\sigma_{\text{tot}}^{\gamma^*p} = \tilde{\sigma}_{\text{DIS}}^{\gamma^*p} \exp \left[-\frac{\tilde{\sigma}_{\text{Dir}}^{\gamma^*p}}{\tilde{\sigma}_{\text{DIS}}^{\gamma^*p}} \right] + \tilde{\sigma}_{\text{Dir}}^{\gamma^*p} + \tilde{\sigma}_{\text{Res}}^{\gamma^*p}$$

where

- $\tilde{\sigma}_{\text{DIS}}^{\gamma^*p} = \left[\frac{Q^2}{Q^2 + m_\rho^2} \right]^2 \sigma_{\text{DIS}}^{\gamma^*p}$
- $\tilde{\sigma}_{\text{Res}}^{\gamma^*p} = \sigma_{\text{Res}}^{\gamma^*p} \left[\frac{m_\rho^2}{m_\rho^2 + Q^2} \right]^2 \left[\frac{W^2}{W^2 + Q^2} \right]^n$
- $\tilde{\sigma}_{\text{Dir}}^{\gamma^*p} = \sigma_{\text{Dir}}^{\gamma^*p} (\hat{p}_{\text{T,min}} = \max(Q, p_{\text{T,min}}))$
 $p_{\text{T,min}} = 1.3 \text{ GeV}, n = 3, m_\rho = 0.7755 \text{ GeV}$

$\sqrt{s} = 85 \text{ GeV}, W_{\text{min}} = 10 \text{ GeV}$:



Intermediate: $0.2 \lesssim Q^2 \lesssim 2.0 \text{ GeV}^2$